

深圳市亿金电子有限公司

TEL: 0755-27876565 <http://www.yijindz.com> QQ:857950243

LT 系列收录机用陶瓷滤波器 LT Series of Ceramic Filter For Radio-Cassette Recorder

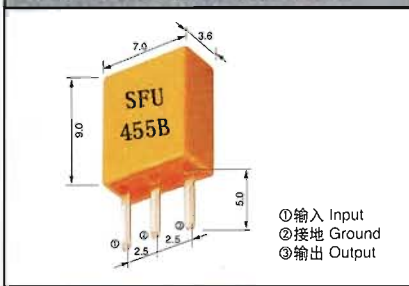
450-470kHz

技术特性 TECHNICAL CHARACTERISTICS

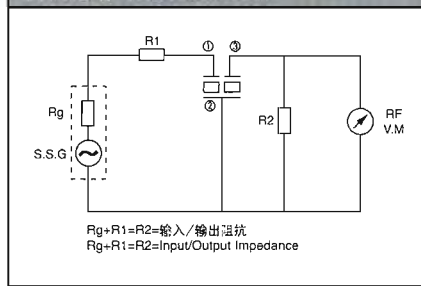
型号 Part Number	中心频率 Center Frequency (f ₀)(kHz)	插入损耗 Insertion Loss (dB) max	6分贝带宽 6dB Band Width (kHz) min	阻带衰减 Spurious Attenuation (f _s ± 100kHz)(dB)min	离谐±9kHz选择性 Selectivity ±9kHz off (dB)min	通带波动 Pass Band Ripple (dB)max	输入/输出阻抗 Input/Output Impedance(Ω)
LT450	450±2	3	8	12	11	1	2
LT455	455±2	3	8	12	11	1	2
LT465	465±2	3	8	12	11	1	2

中心频率可以根据需要在450~470kHz范围内选择 Center Frequency(f₀)is available in a range of 450~470kHz
标称频率公差 ±2 kHz. The nominal frequency tolerance is ±2 kHz

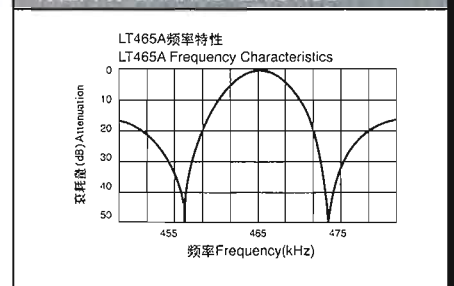
外形与尺寸 FIGURE AND DIMENSIONS



测试电路 TEST CIRCUIT



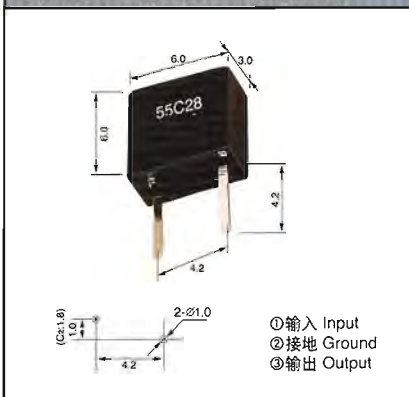
特性曲线 CHARACTERISTICS



JTM 系列通讯机用陶瓷鉴频器 JTM Series of Ceramic Discriminator For Communication

455kHz

外形与尺寸 FIGURE AND DIMENSIONS



技术特性 TECHNICAL CHARACTERISTICS

型号 Part Number	中心频率 Center Frequency (f ₀)(kHz)	解调音频 3分贝带宽 Recovered Audio 3dB BW (kHz)min	解调音频输出 Recovered Audio Output (mV)min	失真度 Distortion Factor (At f ₀)(%)max	适用IC Applicable IC
JTM455C18	455±2	±3.0	180±40	2.0	MC3371
JTM455C24	455±2	±4.0	100±40	2.0	TA31136
JTM455C28	455±2	±4.0	40±20	3.0	TA31142
JTM455C29	455±2	±4.0	125±30	2.5	NE605
JTM455C32	455±2	±4.0	40±20	3.0	TA31143
JTM455C47	455±2	----	140±20 (f ₀) 140±20 (f ₀ ±4.8)	----	TA31147
JTM455C50	455±2	±4.0	64±6.4	4.0	CXA3117N

型号 Part Number	谐振频率 Resonant Frequency (F _r) (kHz)	反谐振频率 Antiresonant Frequency (F _a) (kHz)	带宽 Band Width F _a -F _r (kHz)	谐振阻抗 Resonant Resistance (Ω)max	静电容量 Capacitance pF ± 20%	适用IC Applicable IC
JTM455C2	447.5±1.5 (at Z =2.05kΩ)	463.0±1.5 (at Z =10kΩ)			140	TA8104
JTM455C3		455.0±1.5	48.0±5.0	70	600	CXA1184M
JTM455C4		470.0±1.0	43.0±2.0	300	140	LA8610
JTM455C10	429.0±2.0		51.0±5.0	70	580	TA8103F
JTM455C15		463.5±1.0	43.0±2.0	300	140	CXA1483M
JTM455C25		465.0±1.5	45.0±4.0	300	135	CXA1484

深圳市亿金电子有限公司

TEL:0755-27876565 http://www.yijindz.com QQ:857950243

型号命名 PART NUMBERING

低通滤波器kHz Ceramic Filter (一)

LT M 455 E U C A00 - B0

① ② ③ ④ ⑤ ⑥ ⑦ ⑧

① 产品类别 product type

② 结构、尺寸 structure & size

M: 小型DIP型 small DIP

S: 低背型DIP型 low DIP

C: 塑壳封装SMD型 plastic frame SMD

D: 陶瓷封装SMD型 ceramic frame SMD

普通DIP型 common DIP type: 省略 abbreviation

③ 标称中心频率 nominal center frequency

单位为 kHz (三到四位数字表示) 3 to 4 digit numerals, the unit is kHz

④ 类型 type

带宽 band width (kHz)

A: ± 17.5 ; F: ± 6.0 ; B: ± 15 ; G: ± 4.5 ; C: ± 12.5 ; H: ± 3.0 ; D: ± 10.0 ; I: ± 2.0 ; E: ± 7.5

(有后缀T时, 表示此带宽的高阻带型 suffix T means with high attenuation)

⑤ 振子数、振动模式 number of elements/oscillation mode

U: 4振子, 轮廓4 elements, area expansion mode

W: 6振子, 轮廓6 elements, area expansion mode

⑥ 中心频率允许偏差 center frequency tolerance

B: ± 1 kHz; C: ± 2 kHz; D: ± 1.5 kHz

⑦ 特殊规格 individual specification

⑧ 包装 packaging

低通滤波器 kHz Ceramic Filter (二)

LT B 455 BL2 C H00 - B0

① ② ③ ④ ⑤ ⑥ ⑦

① 产品类别 product type

② 振子数、振动模式 number of elements/oscillation mode

P: 单振子, 轮廓 signal element, area expansion mode

Z: 单振子, 轮廓, 双器件粘连式 signal element, area expansion mode, two elements direct coupling type

B: 双振子, 长度 two elements, length mode

U: 单振子, 轮廓 (LZ型) signal element, area expansion (LZ type)

LT□A型 LT□A type: 省略 abbreviation

③ 标称中心频率 nominal center frequency

单位为 kHz (三到四位数字表示) 3 to 4 digit numerals, the unit is kHz

④ 类型 type

带宽 band width

⑤ 中心频率允许偏差 center frequency tolerance

3: ± 0.3 kHz; 5: ± 0.5 kHz; B: ± 1 kHz; C: ± 2 kHz; D: ± 1.5 kHz

⑥ 特殊规格 individual specification

⑦ 包装 packaging

低频鉴频器 kHz Ceramic Discriminator

JT M 455 C Y 28 C A00 - B0

① ② ③ ④ ⑤ ⑥ ⑦ ⑧ ⑨

① 产品类别 product type

② 结构 structure

M: DIP型 DIP type

C: SMD型 SMD type

③ 标称中心频率 nominal center frequency

单位为 kHz (三到四位数字表示) 3 to 4 digit numerals, the unit is kHz

④ 检波方式 detect mode

C: 正交检波 quadrature detection

⑤ 类型 type

Y: 高容量型 (低容量型省略) high capacitance type (low capacitance type abbreviation)

⑥ 序列号 serial No

与IC型号有关 (三到四位数字表示) related with IC, 3 to 4 digit numerals

⑦ 中心频率允许偏差 center frequency tolerance

2: ± 0.2 kHz; 3: ± 0.3 kHz; 5: ± 0.5 kHz; B: ± 1 kHz; C: ± 2 kHz; D: ± 1.5 kHz; E: ± 0.8 kHz

⑧ 特殊规格 individual specification

⑨ 包装 packaging